

Overview - 2008 CSO/MACO/FSRP 3rd Supplemental Rural Survey

The 2008 Rural Incomes and Livelihood Supplement Survey: This is the third Supplemental Survey to the 1999/2000 Post Harvest Survey which was conducted in August/September 2000. This survey is a fourth visit to the households who were interviewed during the Post Harvest Survey in 2000. The 2nd visit was in 2001 during the first Supplemental Survey and the 3rd visit was in 2004 during the second Supplemental Survey. The same respondents are to be interviewed in 2008. The purpose of the 3rd Supplemental Survey is to obtain information from the 1999/00 PHS respondent households which will provide panel data to the supplemental information already collected in 2001 and 2004. This survey is aimed at studying options to improve crop production and marketing, and food consumption among small scale farmers. Information topic areas to be covered are outlined in Table 1. The 3rd Supplemental Survey to the 1999/2000 Post Harvest Survey asks the respondent to recall events primarily for the 2006/2007 agricultural season.

SEA-level household listing for the 2008 Third Supplemental Survey: This step in the survey provides the basis for systematically relocating panel households to be re-interviewed and for obtaining names of new households to be selected to also be interviewed as part of the sample. The panel households that were interviewed in 2001 and/or 2004 will be re-interviewed if they can be located (Table 2). Along with the panel, new households will also be selected to make a total of 20 households per SEA before the actual household survey fieldwork begins. The results from the SEA-level listing will provide current information on the household and will give an indication of the size of the household as well as provide information for categorizing the households into either two of the farm size strata: A (0-5 ha) or B (5-20 ha).

Steps in the Household Listing in SEA's in Each Province

- Personnel to be involved are identified in Table 3.
- Obtain CSO Maps of SEA Boundaries
- Form two teams to list all households in a given SEA. Use Listing Book/Listing Workbook
- Upon Obtaining a Household's name of head, information will be checked as a list of names of panel households and member to determine if a 2001/2004 panel household has been identified
- Put an identification sticker on each household with a serial listing number to make it easy to return the next day to locate panel and new households added to the sample to be enumerated.

Village Headman Interview: In addition to the household interview, there is also an interview with up to 4 village headmen in each SEA (standard enumeration area) studied. The headman survey is an add-on to the 2008 Third Supplemental survey. The main purpose of this survey is to gather community level data that can not be effectively covered through the household survey. Essentially, we would like to get a quick assessment of a number of problems and opportunities that will help us study the options to improve crop production and marketing, and food consumption for smallholder farmers. The questions cover a number of topics about conditions in this village, such as: basic Information, distances to selected services and infrastructure, village assets and business activities, government fertilizer and maize programmes, access to government agricultural extension services, information about land assets of the village, trends of well-being in the village, information on food assistance, rural development investment priorities (Table 4).

See the Map on next page of the SEAs to be listed and where panel/new interviews will be conducted in each Province

Map of Central Statistical Office Statistical Enumeration Areas (SEAs) Sampled in the CSO/MACO/FSRP Post Harvest and Supplemental Surveys in 2001, 2004 and 2008 by Zambia's Agro-Ecological Zones

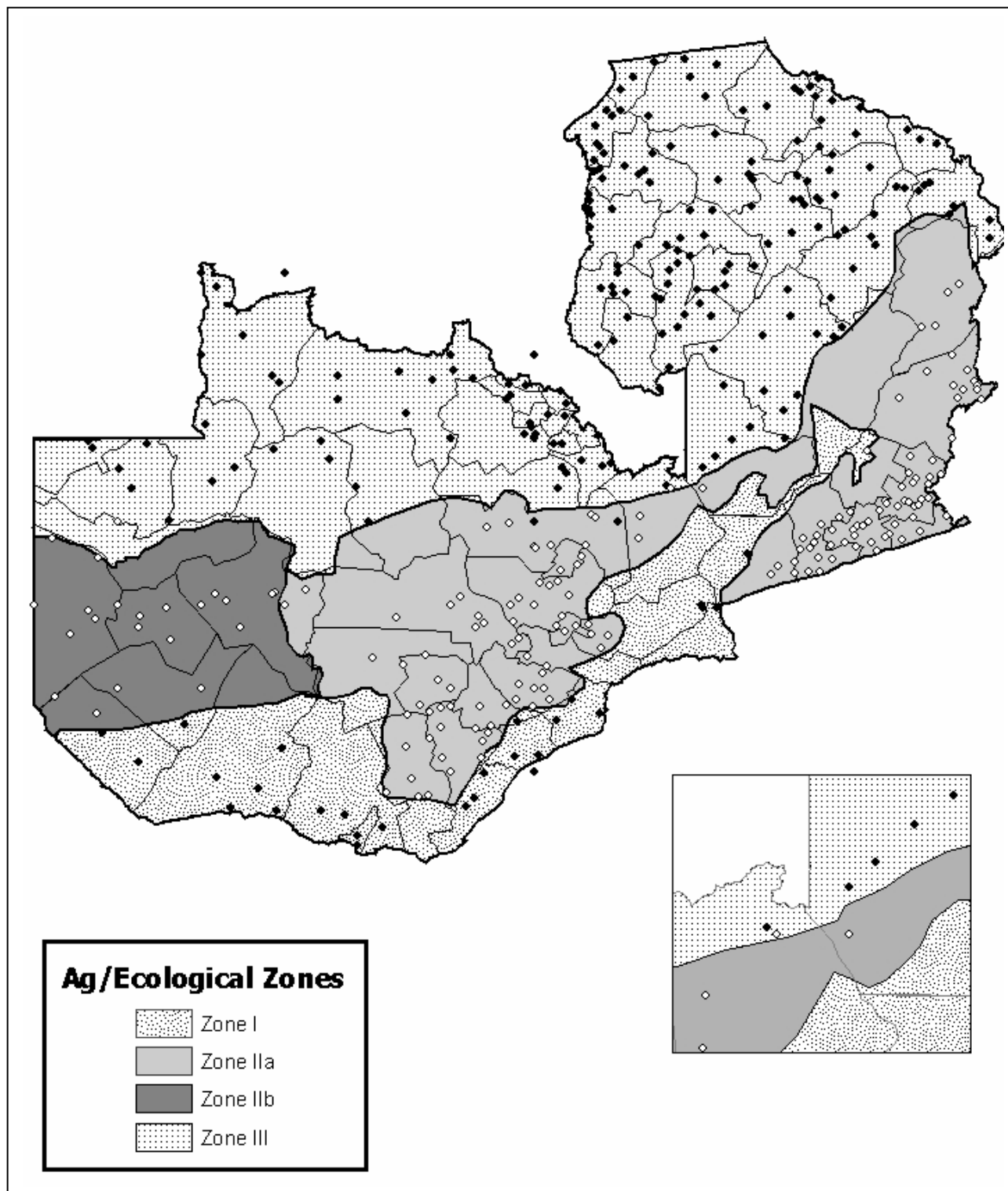


Table 1. 2008 CSO/MACO/FSRP 3rd Supplemental Survey: Rural Households/Livelihoods – Broad Topic Coverage/Reference Period

Section	Topic Coverage	Reference Period
Cover Sheet	Household Identification Information	(Current –Identify Panel /or New Household)
1:	Demographic characteristics of household members	(June 2007 to May 2008)
2:	Off –farm income and remittances	(From June 2007 to May 2008)
3:	Farm land and use	(2006/2007 Agricultural Season)
4:	Crop stocks and sales	(May 2007 – April 2008 Marketing Season)
5:	Food purchases and processing	(May 2007 to April 2008)
6:	Fertilizer acquisitions	(2006/2007 and 2007/2008 Agricultural Seasons)
7:	Agricultural loans (Excluding Fertilizer)	(2006/2007 Agricultural Season)
8:	Information access, distances and cost of services	(Reference Period Open – Current)
9.	Household production assets /implements	(Last Agricultural Season and Now)
10.	Livestock , poultry, and fish farming	(May 2007 to April 2008)
11:	Inheritance, and extended family	(Open and Current)

Table 2. Distribution of SEAs and Households Interviewed in Previous Surveys by Province, Zambia, 2008

	Central	Copper belt	Eastern	Luapula	Lusaka	Northern	Nwestern	Southern	Western	Total
Sampling units (SEAs)	40	24	72	46	13	80	28	49	42	394
Total HHs in 1999/2000 phs	800	480	1,440	920	260	1,600	560	980	840	7880
Total HH interviewed from this 1999/2000 sample which were reinterviewed in 2001	714	393	1,331	777	214	1,363	472	872	786	6922
Total HHs reinterviewed in 2004	573	312	1,126	619	161	1,027	324	689	588	5419
Non-contact HHs in 2004 from the 2001 panel	(33)	(19)	(41)	(37)	(1)	(111)	(39)	(49)	(62)	(392)
Maximum possible 2008 panel (2004 sampled + non contacts in 2004)	606	331	1167	656	162	1138	363	738	650	5811
Desired target number of HHs to be comprised of maximum panel + new sampled HHs	800	480	1,440	920	260	1,600	560	980	840	7880

Table3. Distribution of Personnel Taking Part in the Supplemental Survey by Province, Zambia, 2008

	Central	Copper belt	Eastern	Luapula	Lusaka	Northern	Nwestern	Southern	Western	Total
Sampling units (SEAs)	40	24	72	46	13	80	28	49	42	394
Enumerators	20	12	36	23	8	40	14	25	21	199
Supervisors	8	4	14	10	4	16	6	10	8	80
Vehicles/drivers	4	2	7	5	2	8	3	5	4	40
Data Entry Operators	2	2	3	2	2	3	2	2	2	20
Data Entry Supervisors	1	1	1	1	1	1	1	1	1	9
Master Trainers	2	2	2	2	2	2	2	2	2	18
FSRP/ACF/Peace Corps Volunteers	2-3	1-2	3	3	1	3	3	2	2	21-23

Table 4. CSO/MACO/FSRP 3rd Supplemental Survey: Community Headman Survey – Broad Topic Coverage/Reference Periods

Section	Topic Coverage	Reference Period
Cover Sheet	Household Identification Information	(Current –Identify the SEA and Headman/other respondent)
1:	Basic Information About the Village/Locality	(Current and common practices)
2:	Distance Questions – How far to various services/businesses	(Current)
3:	Village Assets and Business Activities	(Current and 5 years ago)
4:	Government fertilizer and maize marketing programmes	(Current and 5/7 years ago)
5:	Access to Government Agricultural Extension Services	(Current)
6:	Land in the Village	(Current and historically)
7:	Trends influencing well-being of people in the village	(Current and historically)
8:	Food Assistance	(Current and historically)
9.	Views on Rural Development investment priorities	(Current)