

Pathways into and out of Poverty: A Study of Determinants of Rural Household Wealth Dynamics in Kenya

Milu Muyanga, T.S. Jayne, and William J. Burke
Michigan State University

*Paper presented at the Conference on Understanding African Poverty over the
Longue Durée, Harvard University and International Institute for the Advanced
Study of Cultures, Institutions and Economic Enterprise
Accra, Ghana, on July 15-17, 2010*

Background

- Poverty, disease and ignorance identified as major challenges at independence
- Most policy documents address these problems
- However, country's economic performance has been mixed

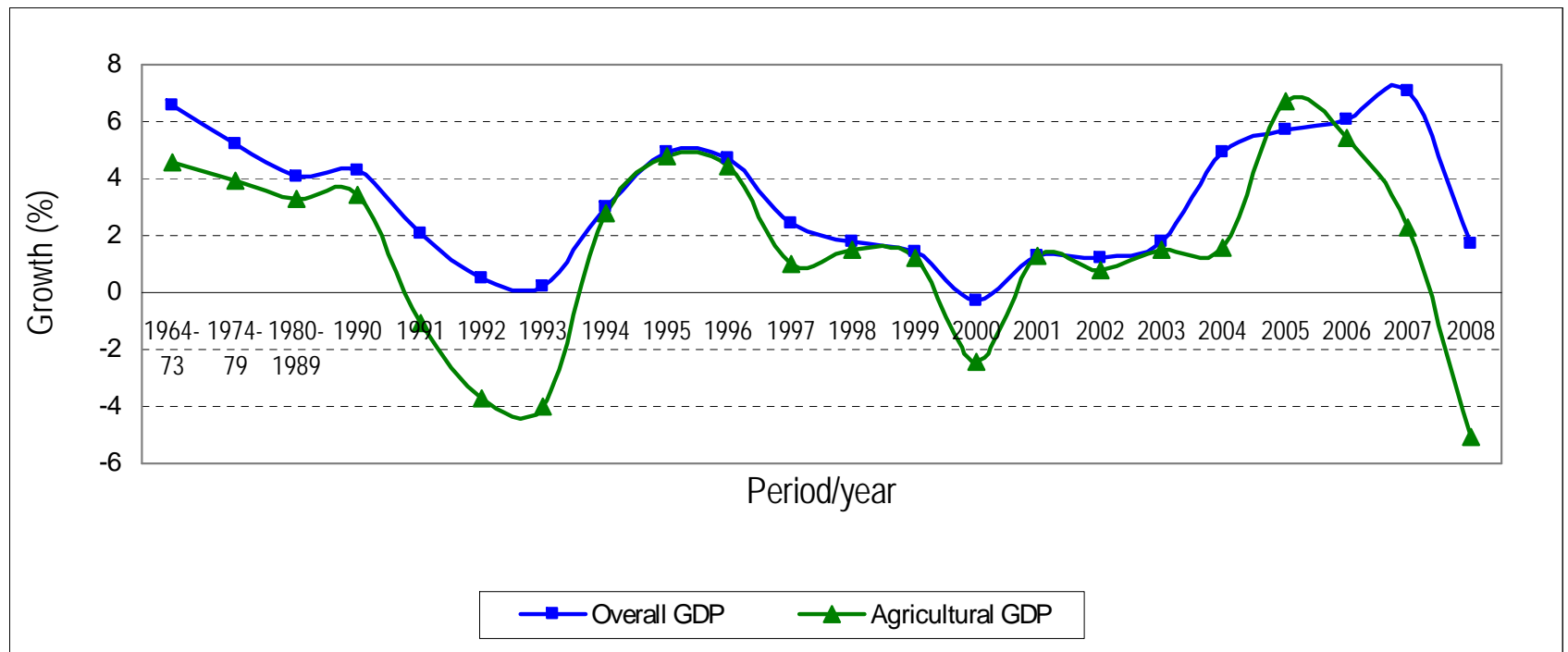


Table 1: National poverty rates

Poverty Measure		WMS III (1997)	KIHBS (2005/06)
		Adult Equivalent	Adult Equivalent
Rural	Absolute	52.9	49.1
	Hardcore	34.8	21.9
Urban	Absolute	49.2	33.7
	Hardcore	7.6	8.3
National	Absolute	52.3	45.9
	Hardcore	29.6	19.1

Table 2: Rural food poverty by region

Province	Headcount ($p_{\alpha=0}$)	Contribution (%)
Central	31.4	9.6
Coast	63.5	9.6
Eastern	45.2	18.8
North	66.0	4.3
Nyanza	46.0	14.8
Rift Valley	49.5	28.0
Western	51.1	15.0
Total-Rural	47.2	100



Observations

- Some smallholder farm households have successfully climbed out of poverty
- Some households that were once well above the poverty line have now descended into poverty
- If factors causing these dynamics were known, it might be possible to replicate these factors more broadly through poverty reduction strategies
- Availability of longitudinal survey data has made such studies possible

Objective and data sources

- We examine the factors associated with changes in farm household wealth over a 10-year period in Kenya.
- The study draws from two sources of data **longitudinal** and **retrospective** survey data sets.
 - Use household panel survey data collected in 1997, 2000, 2004 and 2007
 - We identify three types of smallholder farm households:
 1. those experiencing a major improvement in wealth- **ascenders**
 2. those experiencing a major decline in wealth - **descenders**
 3. consistently relatively well-off households - **non-poor**.
 - In-depth retrospective and life history surveys conducted in 2008 on 30 households in each of these 3 groups



Measure of household welfare

- Household asset wealth is the measure of household welfare
 - more accurately measures wealth than income or consumption
 - less susceptible to random shocks, and is likely to be a more stable indicator of household welfare
 - productive assets consistently collected and valued in each of the four surveys
 - deflated to a common base year



Conceptual framework

- Household's asset holding dynamics is a function of
 - household demographic factors,
 - household's socio-economic environment, including spatial factors such as agro-ecological conditions and access to markets, and
 - intergenerational factors

Data Analysis

- Descriptive: bivariate relationships
- Econometric model

$$y_{it} = \alpha_i + X_{it}\beta + \mu_{it}$$

- With panel data, there are 2 popular methods for estimating this model, fixed and random effects
- However, both approaches have shortcomings
- Mundlak (1978) and Chamberlain (1984) propose a framework known as the correlated random effects estimator (CRE) or the Mundlak-Chamberlain device
- The unobserved, time-constant heterogeneity is modeled

$$\alpha_i = \delta + \bar{X}_i + \zeta_i \quad \zeta_i | X_i \sim N(0, \sigma_\zeta^2)$$



Key findings: Demographic

1. **Age of the household head:** Ascending households more likely to be headed by young heads; descending households more likely to be headed by aged heads
2. **Gender of household head:** Descending group often experienced a switch from male to female headship – due to death or divorce
3. **Education attainment:** Descending group had high proportion with members with no formal education; ascending households had higher proportion of members with post-secondary education



Key Results: Characteristics pertaining to the initial household head

- **Number of wives:** descenders initial household head had two wives while their ascending counterpart had one wife (median values)
- **Education:** descenders more likely to be headed by persons with no formal education
- **Father's education:** ascending households' initial heads' father had more years of education



Key Results: Characteristics pertaining to the initial household head

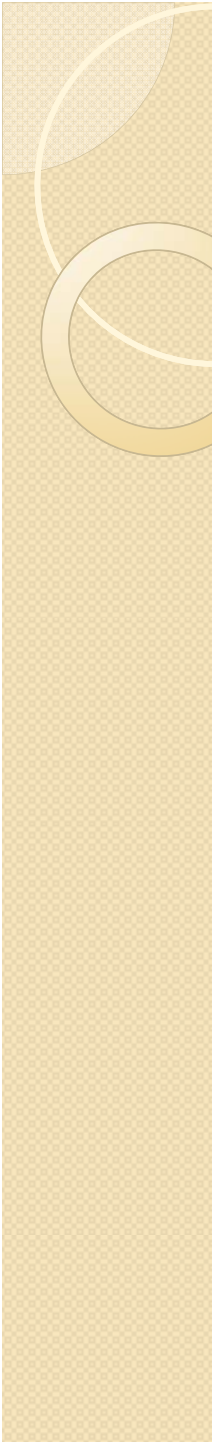
- **Land acreage:** ascenders' father to the initial household head had 35% larger landholdings than descenders

- **Land inheritance:** ascenders' initial household head inherited 38% more land from parents than descenders
- **Inheritance value:** value of inheritance was over 40% higher for non-poor and ascenders



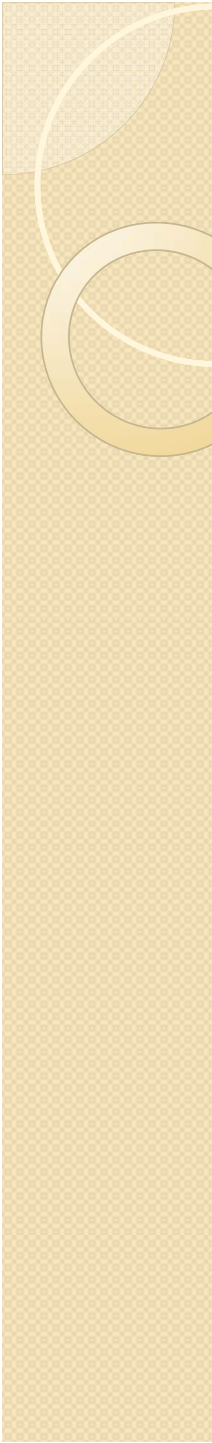
Shocks experienced in the last 10 years before the panel period

- **Deaths:** descenders lost more members through death in the 10 years period prior to the initial survey
- **Illness:** descenders had more chronically ill members in the 10 year period prior to the initial survey
- **Health expenditure:** descenders spent relatively more on chronic sickness
- **Other shocks:** non-poor and ascenders experienced greater financial losses from accidents, acts of nature, etc.



Shocks experienced by the households during the panel period

- **Deaths:** descenders experienced more deaths of household heads
- No clear patterns as far as chronic illnesses and loses incurred as a result of shocks is concerned



Evolution of distances to input markets and infrastructural facilities over the panel period

- There has been a slight decrease in distance to
 - fertilizer retailers
 - electricity
 - motorable roads
 - telephone services
- Non-poor group has the best access to infrastructure and services while the descenders are somewhat farther away
- Direction of causality between household wealth and access to infrastructure and services cannot be established except through the dynamic multivariate approach in the following section.

Sub-sample households: no clear spatial differentiation between non-poor, ascenders and descenders

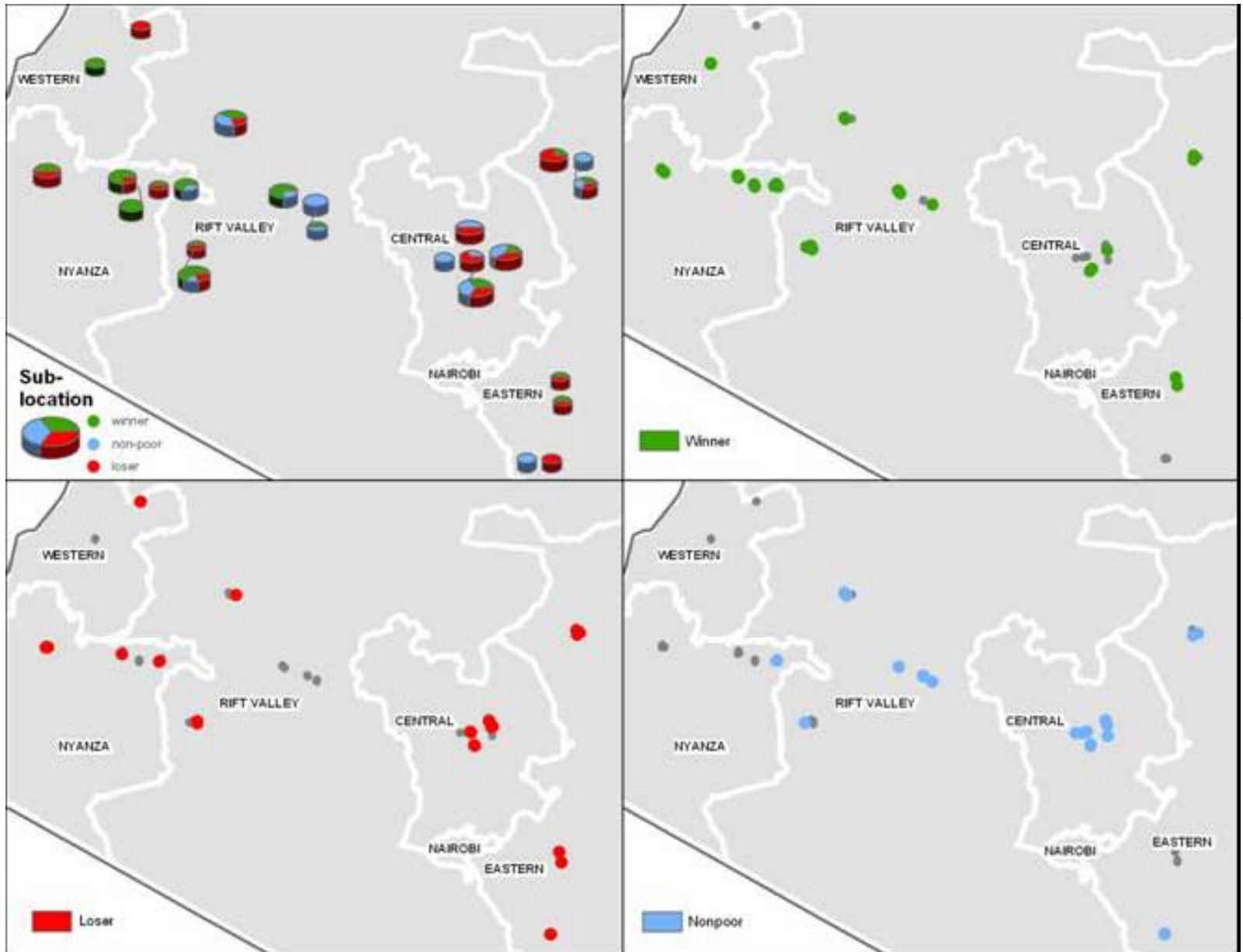


Table 12: Source of finance for asset acquisition and reasons for asset disposal

	Descenders (%)	Ascenders (%)	Non-poor (%)
Source of finance			
_farm output	48	50	70
_off-farm earning	12	33	30
_other	40	17	0
Reasons of asset disposal			
_school fees	44	30	22
_medical bills	24	10	9
_buy food	16	0	0
_other	16	60	69



Findings from Correlated Random Effects Model [1]

1. A change from female to male headship more than doubles household asset within 3 years
2. Number of wives of the household head negatively associated with subsequent asset accumulation trajectory
3. Public investments that reduce distance to infrastructural facilities increase households assets accumulation: distance to health care and clean water are especially significant



Findings from Correlated Random Effects Model [2]

4. Unexpected health setbacks matter
 - Deaths and chronic illness had significant negative impacts on changes in households' asset wealth.
5. Demographic/economic characteristics of prior generation influence asset accumulation
 - Number of brothers
 - Economic position of the father of the current household head
 - Land inheritance of the initial household head
 - birth order among male siblings of the hh head
 - Social capital and connections

Conclusion

- Persistence of poverty across generations: The previous generation's inability to transfer assets required by the younger generation to prepare it to effectively meet challenges faced during adulthood contributes to the persistence of poverty
- Access to land at time household was formed has major influence of subsequent wealth accumulation – influenced by parental decisions like number of children, marrying second wife, etc.
- Staying healthy appears to have major influence on household wealth accumulation – stand to reason in economic systems in which physical labor is dominant